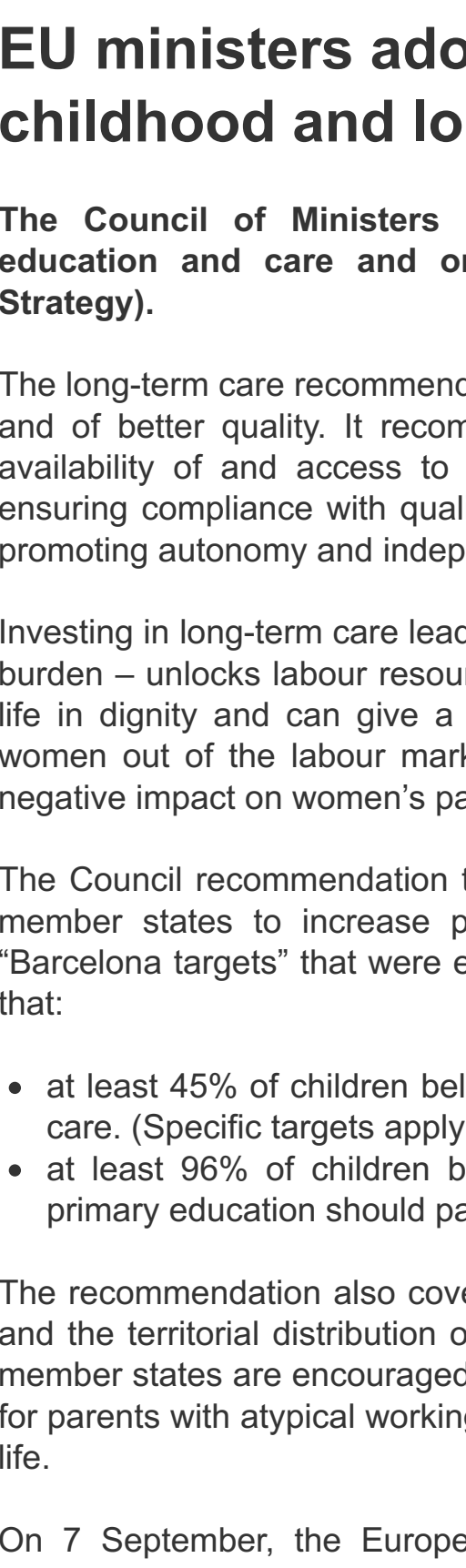
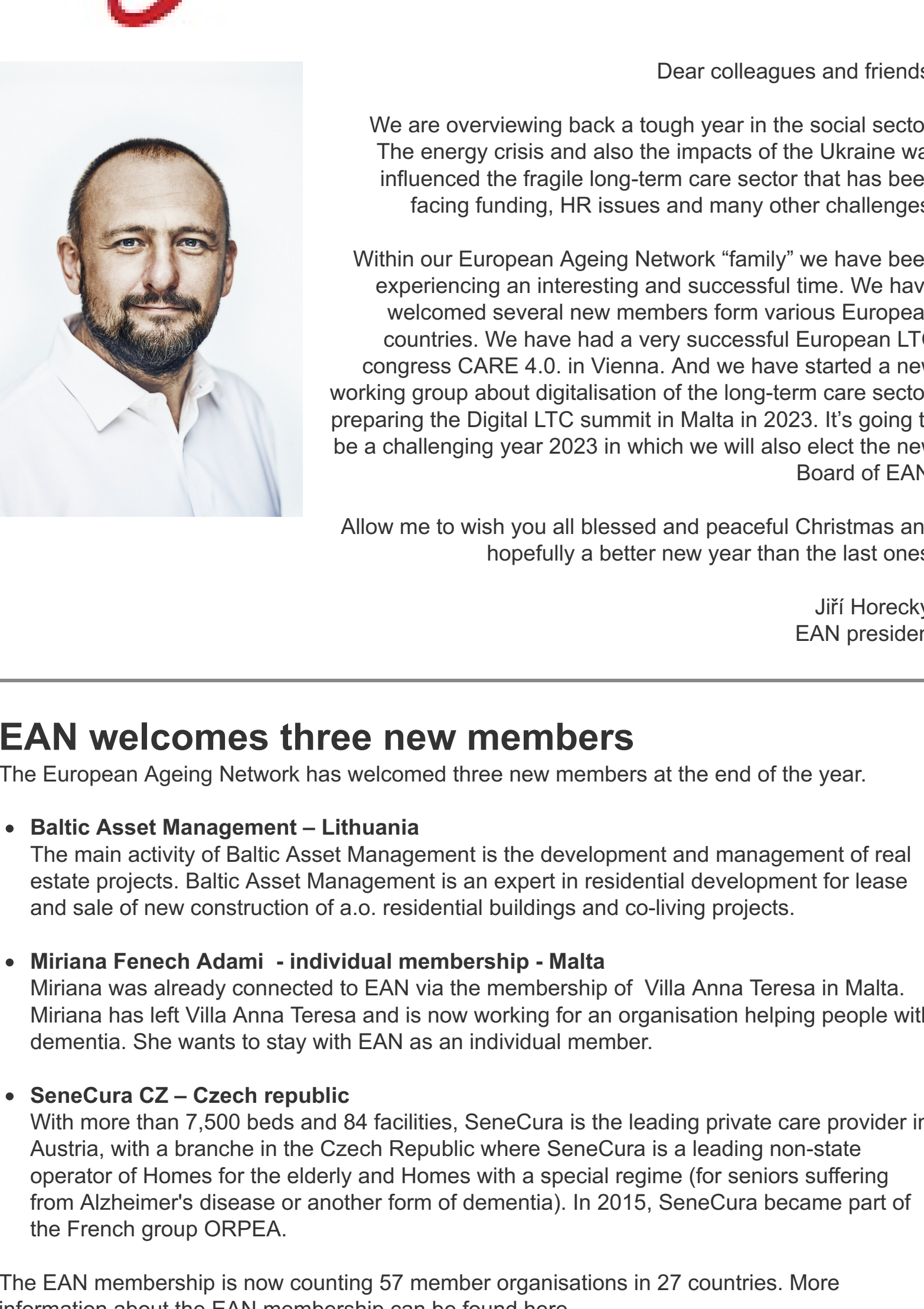




Newsletter Winter 2022



Dear colleagues and friends,

We are overviewing back a tough year in the social sector. The energy crisis and also the impacts of the Ukraine war influenced the fragile long-term care sector that has been facing funding, HR issues and many other challenges.

Within our European Ageing Network "family" we have been experiencing an interesting and successful time. We have welcomed several new members from various European countries. We have had a very successful European LTC congress CARE 4.0. in Vienna. And we have started a new working group about digitalisation of the long-term care sector, preparing the Digital LTC summit in Malta in 2023. It's going to be a challenging year 2023 in which we will also elect the new Board of EAN.

Allow me to wish you all blessed and peaceful Christmas and hopefully a better new year than the last ones!

Jiří Horecký,
EAN president

EAN welcomes three new members

The European Ageing Network has welcomed three new members at the end of the year.

- **Baltic Asset Management – Lithuania**
The main activity of Baltic Asset Management is the development and management of real estate projects. Baltic Asset Management is an expert in residential development for lease and sale of new construction of a.o. residential buildings and co-living projects.
- **Miriana Fenech Adami - individual membership - Malta**
Miriana was already connected to EAN via the membership of Villa Anna Teresa in Malta. Miriana has left Villa Anna Teresa and is now working for an organisation helping people with dementia. She wants to start with EAN as an individual member.
- **SeneCura CZ – Czech republic**
With more than 7,500 beds and 84 facilities, SeneCura is the leading private care provider in Austria, with a branch in the Czech Republic where SeneCura is a leading non-state operator of Homes for the elderly and Homes with a special regime (for seniors suffering from Alzheimer's disease or another form of dementia). In 2015, SeneCura became part of the French group ORPEA.

The EAN membership is now counting 57 member organisations in 27 countries. More information about the EAN membership can be found [here](#).

EU ministers adopt recommendations on early childhood and long term care

The Council of Ministers has adopted two recommendations on early childhood education and care and on affordable high-quality long-term care (European Care Strategy).

The long-term care recommendation proposes actions to make care more accessible, affordable and of better quality. It recommends – among other things – closing the territorial gaps in availability of and access to long-term care, in particular in rural and depopulating areas, ensuring compliance with quality criteria and standards across all long-term care settings and promoting autonomy and independent living.

Investing in long-term care leads to the creation of jobs and – because it lightens the family care burden – unlocks labour resources for other sectors. Long-term care allows people to live their life in dignity and can give a boost to gender equality: care responsibilities keep millions of women out of the labour market or in part-time work. Care responsibilities may also have a negative impact on women's pay and old-age pensions.

The Council recommendation that focuses on early childhood education and care encourages member states to increase participation in these services. It follows on from the original "Barcelona targets" that were established by the European Council in 2002. It is recommended that:

- at least 45% of children below the age of three participate in early childhood education and care. (Specific targets apply to member states that have yet to reach the 2002 goals.)
- at least 96% of children between the age of three and the starting age for compulsory primary education should participate in early childhood education and care.

The recommendation also covers qualitative aspects such as staff-child ratios and group sizes and the territorial distribution of care facilities. When it comes to affordability and accessibility, member states are encouraged to limit out-of-pocket expenses for parents and to offer solutions for parents with atypical working hours allowing them to better reconcile work, family and private life.

On 7 September, the European Commission presented the European Care Strategy. The strategy was accompanied by two proposals for Council recommendations: one on early childhood education and care and another one on affordable high-quality long-term care.

The recommendations can be found [here](#) (LTC) and [here](#) (ECEC).

State of Health in the EU: The European Commission and the OECD release 'Health at a Glance: Europe 2022'



The European Commission and the OECD have released their joint publication Health at a glance: Europe 2022.

The publication uses the most recent data to provide a comprehensive, comparative analysis of the key challenges that European countries must address in order to develop stronger, more resilient health systems following the acute phase of the COVID-19 pandemic.

The first thematic chapter of the publication investigates the impact that the COVID-19 pandemic and the measures put in place to contain the spread of the virus have had on the mental and physical health specifically of young people, whose formative years have been marked by fear, uncertainty and disruption. The analysis finds that, although most European countries have implemented a variety of measures to cushion the impact of the COVID-19 pandemic on young people's health, the magnitude of the impact warrants additional action to prevent the pandemic from permanently scarring an entire generation of children and young adults.

In addition to the thematic chapter assessing the pandemic's impact on young people's health, the 2022 edition of Health at a Glance: Europe assesses the disruption of a wide range of health services for non-COVID patients throughout the pandemic, as well as the policy responses implemented by European countries to mitigate the negative consequences of this disruption.

More information on:
Health at a Glance: Europe 2022 – [full report](#)
Health at a Glance: Europe 2022 – [executive summary](#), [factsheet](#)
The the 'State of Health in the EU' project

New European Commission recommendation recognising Covid-19 as an occupational disease

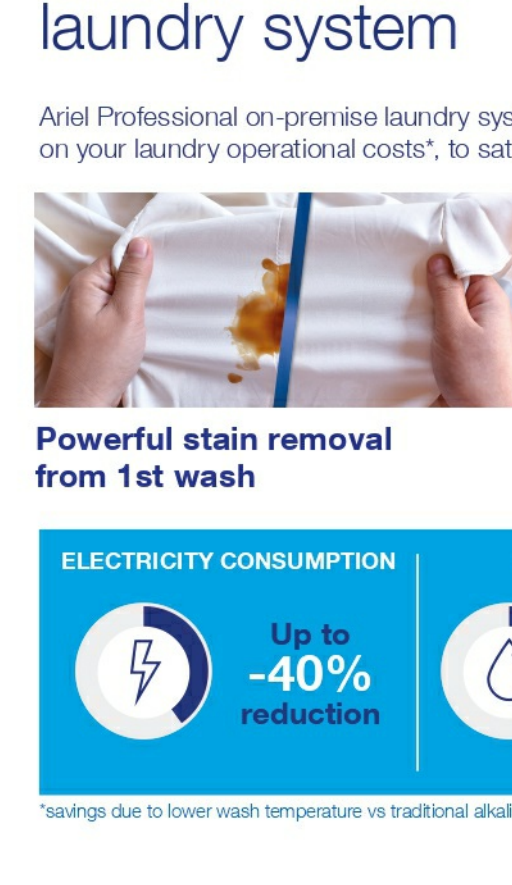
The European Commission has adopted an updated Recommendation on occupational diseases following a [tripartite agreement](#) reached in May 2022 by Member States, workers and employers in the Advisory Committee on Safety and Health at Work (ACSH) on the need to recognise COVID-19 as an occupational disease. EU-OSHA has supported discussions by providing background information on the recognition of Covid-19 as occupational disease or accident.

With it, the [Commission recommends](#) that Member States recognise COVID-19 as an occupational disease if contracted by workers:

- in disease prevention,
- in health and social care,
- in domiciliary assistance,
- or (during a pandemic) in other sectors where there is an outbreak and where a risk of infection has been proven.

The Commission also stresses the importance of supporting workers infected by COVID-19 and families who have lost members because of work exposure to the disease. It aims to strengthen the protection of workers and encourage a consistent approach across the EU. It will be for Member States to follow up on this Recommendation and define the details in national law. The recognition and compensation of occupational diseases is a national competence. While most Member States already recognise COVID-19 as an occupational disease or accident at work, the update aims to further encourage convergence and the recognition of COVID-19 as occupational disease across the EU.

European Commission adopts 2023 EU4Health work programme



The European Commission has adopted the 2023 EU4Health work programme. With a budget of €735,8 million, this work programme will allow for swift progress on priority actions linked to further development of the European Health Union.

This includes actions linked to strengthening the EU's resilience to cross-border health threats and implementation of the European Health Data Space, the Pharmaceutical Strategy for Europe and Europe's Beating Cancer Plan, as well as financing for the European Reference Networks, efforts to address mental health challenges and global health.

The work programme will also support health-related urgencies due to the war against Ukraine. In July of this year, the European Commission signed an association agreement with Ukrainian authorities, opening access funding under EU4Health Programme.

- More information can be found here:
- [2023 EU4Health Work Programme](#)
 - [Factsheet](#)
 - [EU4Health programme 2021-2027 – a vision for a healthier European Union](#)

Energy crisis: from emergency measures to more sustainable social services



The Social Employers of FESE calls on its members to take emergency measures to face the current energy crisis. In its new document they present measures that have been implemented by some social services providers across EU member states and calls for involvement at all levels.

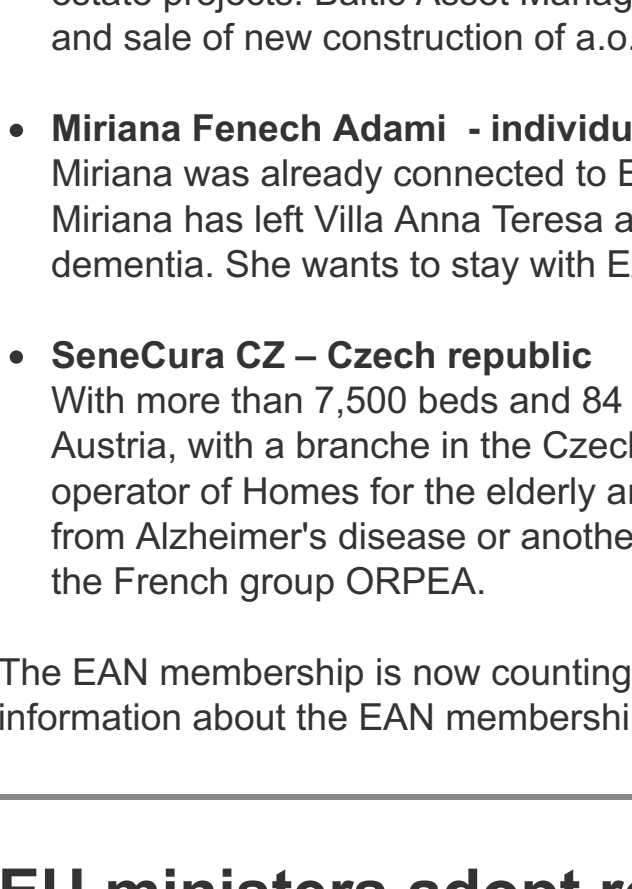
The energy crisis and climate change are putting increasing pressure on societies, impacting especially elderly people, people with disabilities, children and other persons in vulnerable situations. This also has an impact on the services delivered and, in particular, on their energy budget.

Considering the current energy crisis, many European governments call for energy savings for next winter. Emergency measures that will have to be taken can be a chance to prompt longer-term changes, to move towards more sustainable social services in the future and to make social services contribute to the European Green Deal.

Becoming more sustainable can have crucial benefits on our climate, environment, economy, society, health and wellbeing. Every organisation and every individual has a role to play in reducing greenhouse gas emissions by adapting habits, homes, communities, workplaces and infrastructures.

The report can be found [here](#).

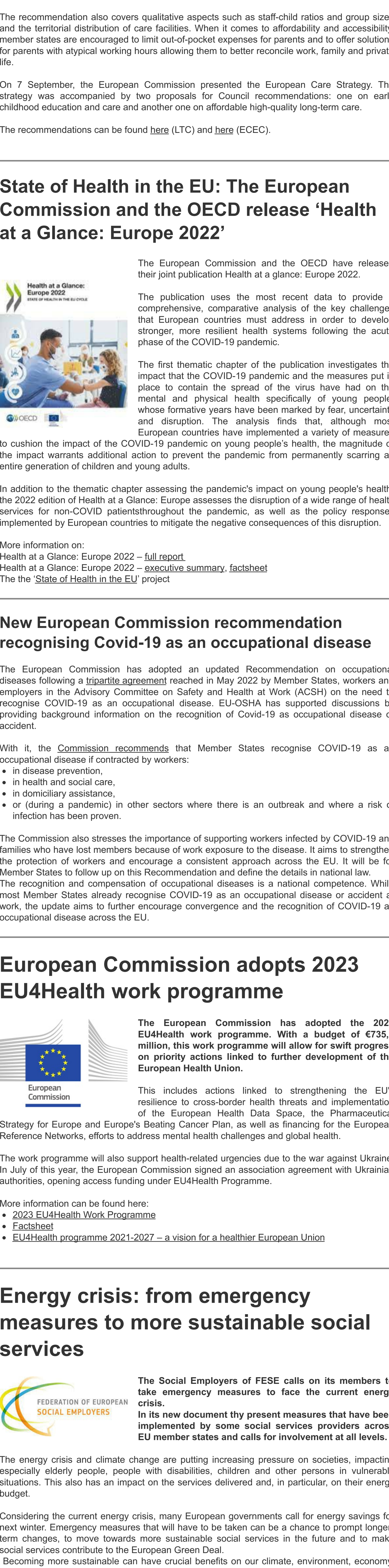
ICT4Elders project meets in Athens

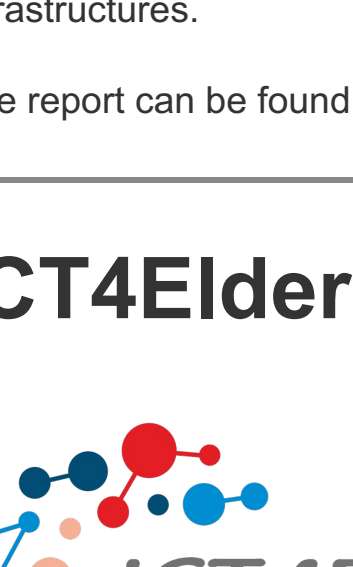


On the 13th of December 2022, the ICT4Elders consortium, of which EAN is a project partner, had the chance to meet in person in Athens, Greece for the 4th project meeting to discuss all ongoing and future aspects of the project. All partners discussed the finalisation of the ICT4Elders' MOOC platform and planned the next tasks to be carried out for the implementation of the peer learning activities, the guidance of older adults in the use of ICT services and the engagement of nursing homes in the integration of ICT4ELDERs in their premises.

Partners also shared plans towards maximising the dissemination and outreach activities of the project and scheduled their next meet-up to take place in April 2023 when the final project meeting will be held in Prague.

For more information about this project, please click [here](#).
Karel Vostry – EAN



 Co-funded by the Erasmus+ Programme of the European Union

Upcoming conferences and meetings

January 2023

- **18 Jan 2023**
[Foresee Project Final conference](#) "Social services in times of crisis: Building resilience and improving attractiveness", EESC (BE - Brussels)

March 2023

- **6th Mar 2023**
7th edition [AgeingFit](#) (FR - Lille)
- **8-9 Mar 2023**
EAN Executive Board Meeting (CZ - Jihlava)

April 2023

- **26-28 Apr 2023**
General Assembly Meeting (MT - Malta)

Partners of the European Ageing Network



with people in mind



HARTMANN



P&G Professional™

Helps. Cares. Protects.

Ariel Professional on-premise laundry system

Ariel Professional on-premise laundry system delivers powerful cleaning optimized for care homes, delivering up to 20% savings on your laundry operational costs*, to satisfy your residents while minimizing your costs.



Powerful stain removal from 1st wash



Helps keep colours brilliance



Up to 2X long lasting freshness with plant-based softness*
90% of respondents considered laundry softness as part of their daily life.

ELECTRICITY CONSUMPTION	WATER USAGE	WASH TIME	CARBON FOOTPRINT
Up to -40% reduction	Up to -23% reduction	Up to -28% reduction	50% of respondents considered laundry softness as part of their daily life.

*Savings due to lower wash temperature vs traditional alkaline bleach systems



P&G Professional™
WOW that's CLEAN

European Ageing Network (EAN)

The European Ageing Network (EAN) is the new association of the European Association of Homes and Services for the Ageing (EAHSA) and the international umbrella organisation representing national associations for directors and providers of long-term care services in Europe. The European Ageing Network groups more than 10,000 care providers, is present in 27 European countries, and is servicing millions of older people in Europe.

EAN is registered in Luxembourg, has its Secretariat in Prague and a branch office in Brussels. For more information, or for a membership application, contact info@ean.care.

You can also follow EAN via



If you like this newsletter, feel free to share with your own networks via the links below



This email has been sent to: [{{email}}](#). • If you no longer want to receive this newsletter, you can [unsubscribe here](#). • You can also [view and edit your subscription](#). • Please add m.smeets@ean.care to your address book to ensure our emails continue to reach your inbox.

